

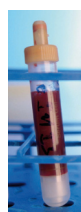
milenia biotec

## Milenia QuickLine HAMA Lateral Flow Immunoassay

**Human anti-mouse antibodies (HAMA)** can interfere with diagnostic imaging procedures, reduce the effectiveness of monoclonal antibody therapies, and distort laboratory results. The IVDD-compliant and CE-marked **lateral flow-based HAMA rapid test Milenia QuickLine HAMA** (REF MQHM Z) provides quick clarity without the need for laboratory equipment.

### Test Procedure

#### Preanalytics



##### Use serum tubes only!

Use blood collection tubes without anticoagulants!

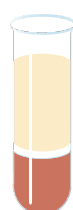
Separate serum from cells by:

- a) Sedimentation (min. 60 minutes)
- b) Centrifugation

#### Preparation

- ▶ Bring test unit and sample buffer to room temperature (18-28°C) before opening!
- ▶ Use test unit immediately after opening!
- ▶ Do not store test units at room temperature!

#### 1. Sample



Pipette **50 µL serum** directly onto the fleece of the test unit.

Cells



#### 2. Buffer



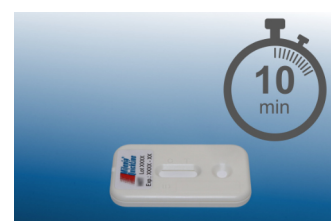
Add **1 drop buffer**.

Note:  
Avoid contaminating the bottle with sample material.



#### 3. Incubation

Incubate for **10 minutes** at room temperature.



## 4. Evaluation (visual)

### Interpretation of Results

Place the evaluation card (Fig. 1) with its reference line (see red arrow) on the test line of the test unit (see Figs. 2 and 3).



Fig. 1

The result is considered **negative**:

- If the **test line T** is **weaker** or **lighter in color** than the color line on the right side of the evaluation card.
- If the **test line T** is **not colored**.

The **control line C** must always be colored (**function control** of the test unit).

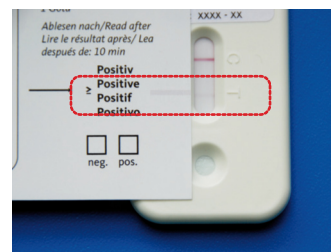


Fig. 2

The result is considered **positive**:

- If the **test line T** is the **same color** or **darker** than the color line on the right side of the evaluation card.

The **control line C** must always be colored (**function control** of the test unit).

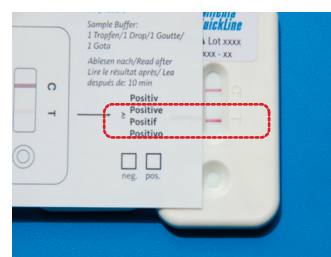





Fig. 3

Further information on **Milenia QuickLine HAMA** can be found in [Instructions for Use \(IFU\)](#) and [Blog Article](#).

Any questions, requests, or suggestions? Feel free to [contact](#) us at any time.

 **Milenia Biotec GmbH**  
Versailler Straße 1  
35394 Gießen  
Germany

 [info@milenia-biotec.de](mailto:info@milenia-biotec.de)  
 +49 641 948883-0  
 [www.milenia-biotec.com](http://www.milenia-biotec.com)