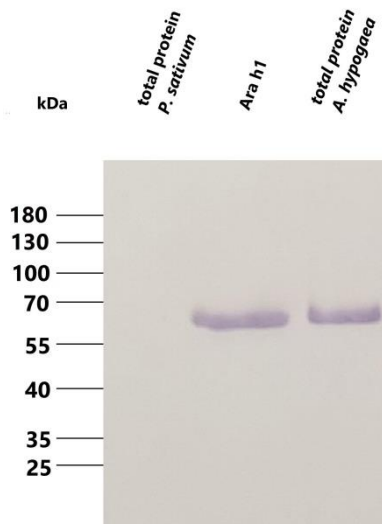


Ara h1 (Major peanut allergen) Monoclonal Antibody (21H2)

Product Details

Catalogue No.	MAB002
Description	Mouse monoclonal antibody to Ara h1
Specificity	No cross reaction with <i>P. sativum</i> / <i>A. hypogaea</i> proteins
Host	Mouse
Isotype	IgG1, kappa light chain
Type	Monoclonal
Clone	21H2
Immunogen	Recombinant Ara h1
Form	Liquid
Concentration	1 mg/mL
Purification	Protein G
Storage Buffer	PBS pH 7.4, 0.05% NaN ₃ as preservative
Storage Conditions	Store at +4 °C short term (1-2 weeks), -20°C for longer storage, avoid freeze/thaw cycles (aliquot)

Application and Dilution



Western blot:

Optimal dilution: 1:5 000 to 1:20 000

Note:

Since applications vary, each experimenter should optimize the conditions in order to achieve optimal results

Product image:

Western blot analysis of Ara h1 on total protein lysate of *Pisum sativum* (pea) seeds (left lane) as negative control, purified Ara h1 from *Arachis hypogaea* seeds (middle lane) and total protein from *A. hypogaea* seeds (right lane). Dilution 1:10 000

Tested Applications:

ELISA, Dot Blot

General Information

Ara h1 is a major peanut allergen and therefore involved in one of the most serious food allergies. The glycoprotein Ara h1 has a molecular weight of **64 kDa** (monomer). Ara h1 is a heat-stable protein, which forms a stable homotrimer.

This product is "For research use only, not for use in diagnostic and therapeutic procedures"

For any questions and suggestions, please contact us:

Tel: +49 641 – 94 88 83 – 0

Fax: +49 641 – 94 88 83 – 80

Web: www.milenia-biotec.com